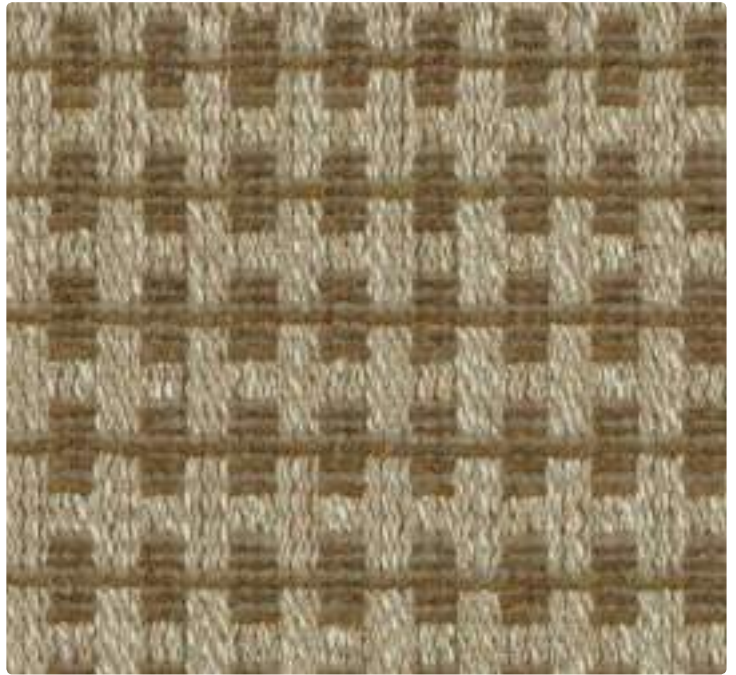




631-007 Ash



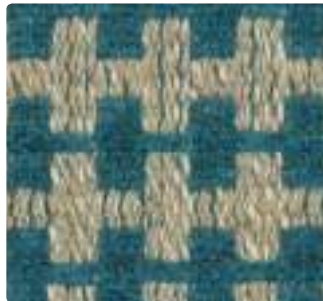
631-017 Bark



631-002 Goldenrod



631-009 Terracotta



631-014 Aegean



631-023 Olive



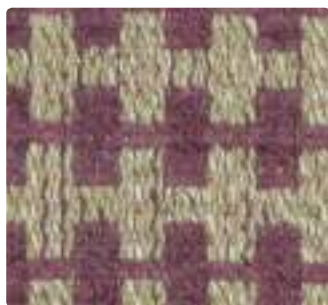
631-001 Cherry



631-004 Cornflower



631-013 Eucalyptus



631-008 Eggplant



631-006 Alder



631-003 Pine



Application
Upholstery Seating

Content
39% Polyester, 25% Viscose,
15% Cotton, 15% Acrylic,
6% Linen

Width
54 inches / 137 cm

Abrasion (Wyzenbeek/Cotton Duck)
Exceeds 150,000 Double Rubs

Finish
Stain Repellent - PFOA &
PFOS Free

Reduced Environmental Impact
GREENGUARD Gold Certified
OEKO-TEX® Certified



TECHNICAL INFORMATION

Content: 39% Polyester, 25% Viscose, 15% Cotton, 15% Acrylic, 6% Linen

Width: 54 inches / 137 cm

Weight: 25.43 oz./linear yard / 788.42 g/lm

Backing: Acrylic

Finish: Stain Repellent - PFOA & PFOS Free

Approx. Repeat: 0.71 in/1.8 cm H, 0.71 in/1.8 cm V

Directional: Yes

Railroaded: No

PERFORMANCESurface Abrasion: Heavy Duty ASTM D4157
(Wyzenbeek/Cotton Duck)**Results**Exceeds 150,000 Double Rubs
Multiple factors affect fabric durability and appearance retention, including end-user application and proper maintenance. Wyzenbeek results above 100,000 double rubs have not been shown to be a reliable indicator of increased fabric lifespan.

Pilling Resistance ASTM D3511

Class 4.5

Colorfastness to Crocking AATCC 8

Dry: Grade 4 min. / Wet: Grade 4 min.

Colorfastness to Light AATCC 16 Option 3

Grade 4 at 40 hours

FLAMMABILITY

California Technical Bulletin 117-2013

NFPA 260/UFAC Class 1

May comply with California Technical Bulletin 133 when combined with appropriate components.

REDUCED ENVIRONMENTAL IMPACTThis product is GREENGUARD Gold Certified for low chemical and particle emissions to UL standard UL 2818 and may contribute to LEED certification. For complete information visit mayerfabrics.com and UL.com/gg.

OEKO-TEX® Certified

CLEANING INFORMATION

W: Water-Based Cleaner

DYE TRANSFER DISCLAIMER

Certain clothing and accessory dyes (such as those used on denim jeans) may migrate to lighter colors. This phenomenon is increased by humidity and temperature and is irreversible. Mayer Fabrics will not assume responsibility for dye transfer caused by external contaminants. Please check compatibility when using this product in combination with painted or varnished surfaces.

ADDITIONAL INFORMATION**Custom Capabilities:** All patterns can be custom colored. Minimum yardage applies.**Digital Swatch Card Color Matching:** Due to color variations on different monitors and color printers, actual swatch colors may vary slightly. Please request a memo sample from Mayer Fabrics to ensure proper color representation.**Specifications:** Specifications are correct at the time of printing. Current specifications are available on our website.This fabric meets or exceeds these ACT performance guidelines.
Certification Marks owned by ACTWater and Stain
Repellent Finish**MAYERFABRICS**