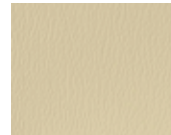
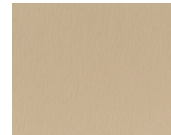


**US 394**  
Adobe White



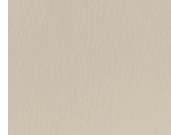
**US 385**  
Parchment



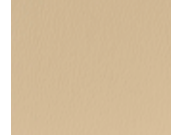
**US 404**  
Bone



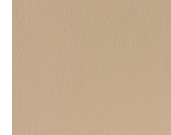
**US 410**  
Taupe



**US 396**  
Alabaster



**US 384**  
Sand



**US 409**  
Bisque



**US 403**  
Putty



**US 519**  
Doe



**US 535**  
Maple



**US 536**  
Russet



**US 387**  
Camel

**US 536**  
Russet



**US 322**  
Sun Yellow



**US 524**  
Golden Corn



**US 534**  
Orange Ochre



**US 372**  
Mandarin Orange



**US 421**  
Oak



**US 377**  
Cinnamon



**US 376**  
Terra Cotta



**US 504**  
Rosalee



**US 358**  
Tomato



**US 360**  
American Beauty



**US 520**  
Cinnabar



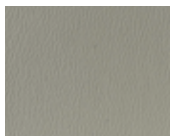
**US 507**  
Dark Cherry



**US 370**  
Paprika



**US 357**  
Claret



**US 413**  
Dove



**US 523**  
Bronze



**US 365**  
British Tan



**US 369**  
Gingersnap



**US 375**  
Chestnut



**US 381**  
Mocha



**US 383**  
Espresso



**US 526**  
Sage



**US 527**  
Artichoke



**US 529**  
Olive Green



**US 343**  
Emerald



**US 533**  
Nebo



**US 344**  
Forest



**US 350**  
Yew Green



**US 531**  
Platinum



**US 417**  
Dusty Jade



**US 426**  
Grotto



**US 425**  
Greystone



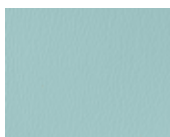
**US 392**  
Gunmetal



**US 429**  
Graphite



**US 393**  
Black



**US 517**  
Fjord Blue



**US 414**  
Wedgewood



**US 514**  
Capri Blue



**US 353**  
Space Blue



**US 345**  
Regimental Blue



**US 427**  
Blue Ridge



**US 432**  
Imperial Blue



**US 532**  
Admiral



**US 516**  
Sky Blue



**US 354**  
Royal



**US 511**  
Deep Violet



**US 510**  
Concord



**US 364**  
Burgundy





## Physical Properties

- Roll Width: 54"
- Roll Length: 30 yards
- Weight per Lin. Yard: 37.0 oz.
- Pattern Repeat: N/A

## Performance Properties

- Sulfide Stain Resistant
- ASTME 1428-Pink Stain Test
- Oil Resistant
- Cold Crack: -20°
- Mildew Resistant
- Ultraviolet Stable Pigment
- Static Dissipative
- Abrasion #8 Cotton Duck  
1,500,000 dbl rubs

## Flammability Performance

- Cal. Fire Code 117-2013
- MVSS-302
- Port Authority of NY/NJ
- FAA, FAR 25.853 A
- IMO 2010 FTP Code, Part 8
- Crib 5
- BIFMA Class I
- EN 1021, part 1&2: 2014
- Boston Fire Code IX-I
- NFPA 260 Cover Fabric
- CAN ULC S109
- UFAC Class I

## Disinfectability

Naugahyde with Advanced BeautyGard<sup>®</sup> has been formulated to achieve a superior level of disinfectability with disinfectant products containing sodium hypochlorite (common household bleach) diluted 1:10.

## Serviceability

Advanced BeautyGard<sup>®</sup> protective top coat finish is produced from environmentally friendly materials and processes and is technically formulated to achieve the highest performance standards.

Naugahyde with Advanced BeautyGard<sup>®</sup> provides outstanding protection in difficult medical and healthcare environments.

*This product contains agents to protect it against bacterial and fungal micro-organisms.*



CANADA ENGLISH 800 663 6647 - FRANÇAIS 888 663 6647  
USA 877 953 6647  
FAX 888 274 2910  
ORDERS@ENNISFABRICS.COM  
ENNISFABRICS.COM



SPIRIBCBC  
0223

