

SONNET



ST-016
Silver



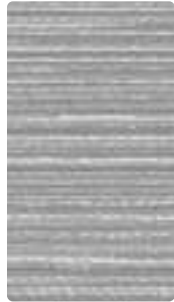
ST-004
Powder



ST-003
Sage



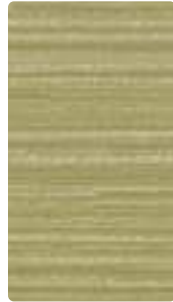
ST-002
Amber



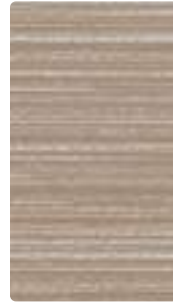
ST-026
Zinc



ST-014
Ocean



ST-013
Pear



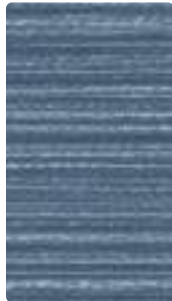
ST-007
Latte



ST-027
Beach



ST-036
Titanium



ST-024
Chambray



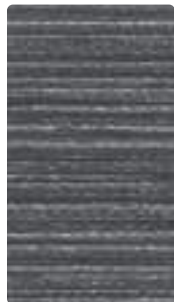
ST-023
Moss



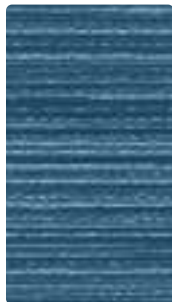
ST-017
Driftwood



ST-009
Mango



ST-046
Slate



ST-034
Rain



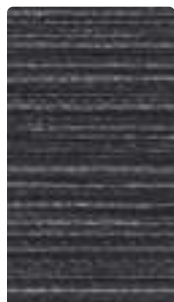
ST-033
Willow



ST-000
Taupe



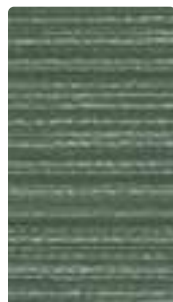
ST-019
Terra Cotta



ST-006
Smoke



ST-044
Ink



ST-043
Laurel



ST-010
Cocoa



ST-001
Cherry

Upholstery

78% Vinyl - Phthalate Free face,
22% Recycled Polyester backing

54 inches / 137 cm

Exceeds 100,000 Double Rubs

Soil & Stain Resistant Top Coat

GREENGUARD Gold Certified

SONNET

TECHNICAL INFORMATION

Application: Upholstery

Content: 78% Vinyl - Phthalate Free face, 22% Recycled Polyester backing

Backing: Recycled Polyester

Weight: 26 oz./linear yard / 806.09 g/lm

Width: 54 inches / 137 cm

Finish: Soil & Stain Resistant Top Coat

Approx. Repeat: Non-Matching

Directional: Yes

Shown Railroaded: No

PERFORMANCE

Abrasion: Exceeds 100,000 Double Rubs
(Wyzenbeek/Cotton Duck)

Abrasion test results exceeding ACT Performance Guidelines are not an indicator of product lifespan. Multiple factors affect durability and appearance retention.

Crocking: Dry: Grade 4 / Wet: Grade 4

Colorfastness to Light AATCC 16, Option 3 / CFFA-2: Grade 4.5 at 1000 hours

FLAMMABILITY

California Technical Bulletin 117-2013
NFPA 260/UFAC Class 1

REDUCED ENVIRONMENTAL IMPACT

This product is GREENGUARD Gold Certified for low chemical and particle emissions to UL standard UL 2818 and may contribute to LEED certification. For complete information visit mayerfabrics.com.

No FR Additives No Antimicrobials/Antibacterials PFAS Free

CLEANING INFORMATION

WS: Water/Solvent Cleaner

BC: Bleach Cleanable –

1 part bleach, 9 parts water = 10% bleach, 90% water solution.

CFC: Coated Fabrics Cleaning – Refer to Mayer website for complete cleaning info.

DYE TRANSFER DISCLAIMER

Certain clothing and accessory dyes (such as those used on denim jeans) may migrate to lighter colors. This phenomenon is increased by humidity and temperature and is irreversible. Mayer Fabrics will not assume responsibility for dye transfer caused by external contaminants. Please check compatibility when using this product in combination with painted or varnished surfaces.

ADDITIONAL INFORMATION

Custom Colors: All patterns can be custom colored. Minimum yardage applies.

Warranty: Please refer to the Mayer website for warranty information by pattern.

Digital Swatch Card Color Matching: Due to color variations on different monitors and color printers, actual swatch colors may vary slightly. Please request a memo sample from Mayer Fabrics to ensure proper color representation.

Complete and current product information available at mayerfabrics.com.



MAYER FABRICS



STCD ©2023 51123

T 800.428.4415 mayerfabrics.com
500 S. Kitley Ave. Indianapolis, IN 46219