

LABYRINTH



MAYERFABRICS

Upholstery Seating



Application
Upholstery Seating

Content
75% Polyester, 25% Cotton

Width
55 inches / 140 cm

Abrasion (Wyzenbeek/Cotton Duck)
Exceeds 100,000 Double Rubs

Finish
Stain Repellent - PFOA & PFOS Free

Reduced Environmental Impact
GREENGUARD Gold Certified

628-017
Flax

MAYERFABRICS

Shown at approximately 67% scale.
Due to color variations in printing, actual swatch colors may vary slightly.
Please order a memo sample prior to placing any order.



628-007
Taupe



628-009
Persimmon



628-017
Flax



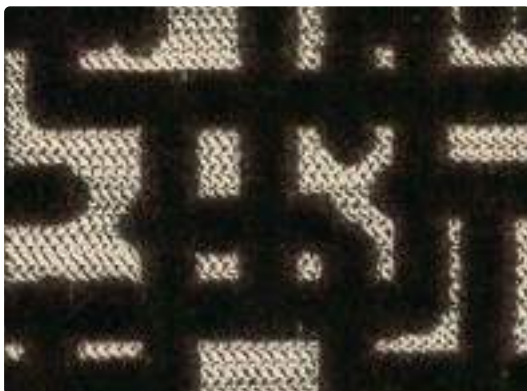
628-001
Ruby



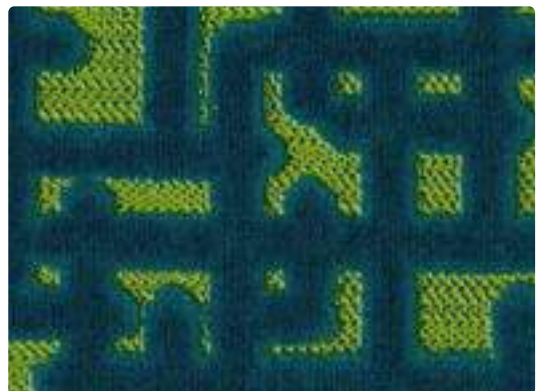
628-006
Smoke



628-004
Sapphire



628-000
Coffee



628-013
Juniper

TECHNICAL INFORMATION

Content: 75% Polyester, 25% Cotton

Width: 55 inches / 140 cm

Backing: Acrylic

Approx. Repeat: 13.77 in/34.98 cm H, 13.77 in/34.98 cm V

Weight: 30.69 oz./linear yard / 951.49 g/lm

Finish: Stain Repellent - **PFOA & PFOS Free**

Directional: Yes

Railroaded: No

PERFORMANCE

Surface Abrasion: Heavy Duty ASTM D4157
(Wyzenbeek/Cotton Duck)

Pilling Resistance ASTM D3511

Colorfastness to Crocking AATCC 8

Colorfastness to Light AATCC 16 Option 3

Results

Exceeds 100,000 Double Rubs

Class 5

Dry: Grade 4 min / Wet: Grade 4 min

Grade 4.5 at 40 hours

FLAMMABILITY

California Technical Bulletin 117-2013

NFPA 260/UFAC Class 1

May comply with California Technical Bulletin 133 when combined with appropriate components.

REDUCED ENVIRONMENTAL IMPACT

This product is **GREENGUARD Certified** for low chemical and particle emissions to UL standard UL 2818 and may contribute to LEED certification. For complete information visit mayerfabrics.com and UL.com/gg.

Does not contain the chemicals listed on California Prop 65

Does not contain conflict minerals

Bisphenol A or Bisphenol A derived chemicals BPA (including thermal paper) Free

Bromine and chlorine-based compound free

Phthalate Free (including DEHP)

Mercury Free

Lead Free

Cadmium Free

Antimony Free

Hexavalent Chromium Free

Azo Dye Free

Nanomaterial Free

CLEANING INFORMATION

S: Solvent Cleaner

DYE TRANSFER DISCLAIMER

Certain clothing and accessory dyes (such as those used on denim jeans) may migrate to lighter colors. This phenomenon is increased by humidity and temperature and is irreversible. Mayer Fabrics will not assume responsibility for dye transfer caused by external contaminants. Please check compatibility when using this product in combination with painted or varnished surfaces.

ADDITIONAL INFORMATION

Custom Capabilities: All patterns can be custom colored. Minimum yardage applies.

Digital Swatch Card Color Matching: Due to color variations on different monitors and color printers, actual swatch colors may vary slightly. Please request a memo sample from Mayer Fabrics to ensure proper color representation.

Specifications: Specifications are correct at the time of printing. Current specifications are available on our website.



This fabric meets or exceeds these ACT performance guidelines. *Certification Marks owned by ACT*



Water and Stain Repellent Finish



LABYRINTH – Approx. Repeat: 13.77 in/34.98 cm H, 13.77 in/34.98 cm V



MAYERFABRICS